



OPL  
2020

# PAINTING WITH ZY

Summer Reading Program



# Rapunzel's Lanterns

Approx. Time: 45 min - 1 hr.

Inspired by Disney's Movie  
*Tangled*

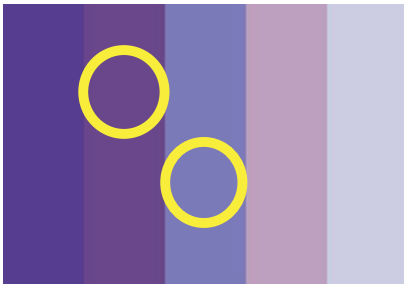
Canvas Size - 11x14



# Materials Needed

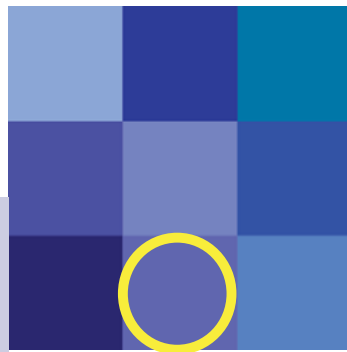
## Paint

- Blue
- Dark Purple
- Light Purple
- Black
- Light Yellow
- Dark Yellow
- White



## Brushes

- Large Flat Brush
- Rigger Brush
- Round Brush
- Bristle Brush

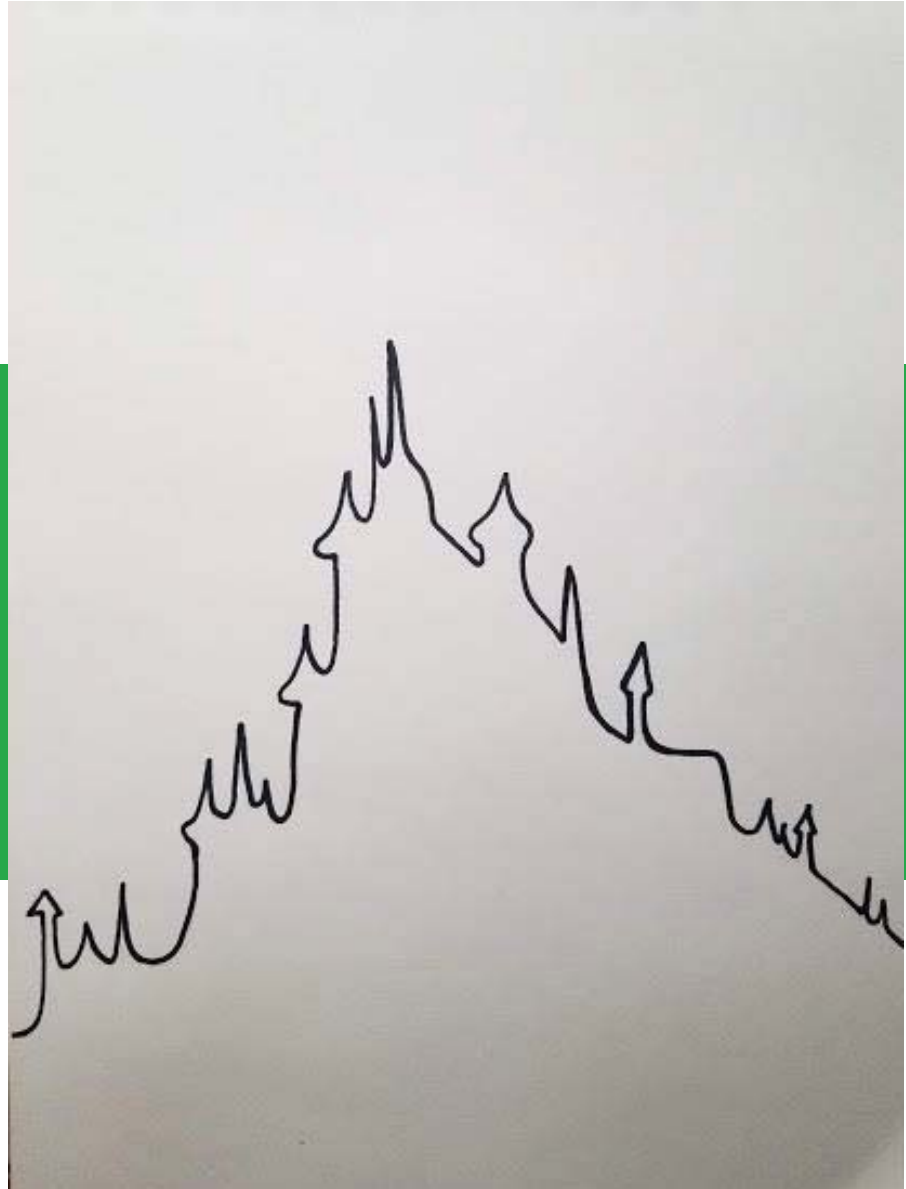
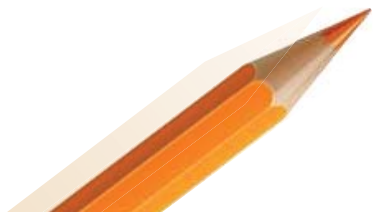


Canvas Size - 9x10 or 11x14



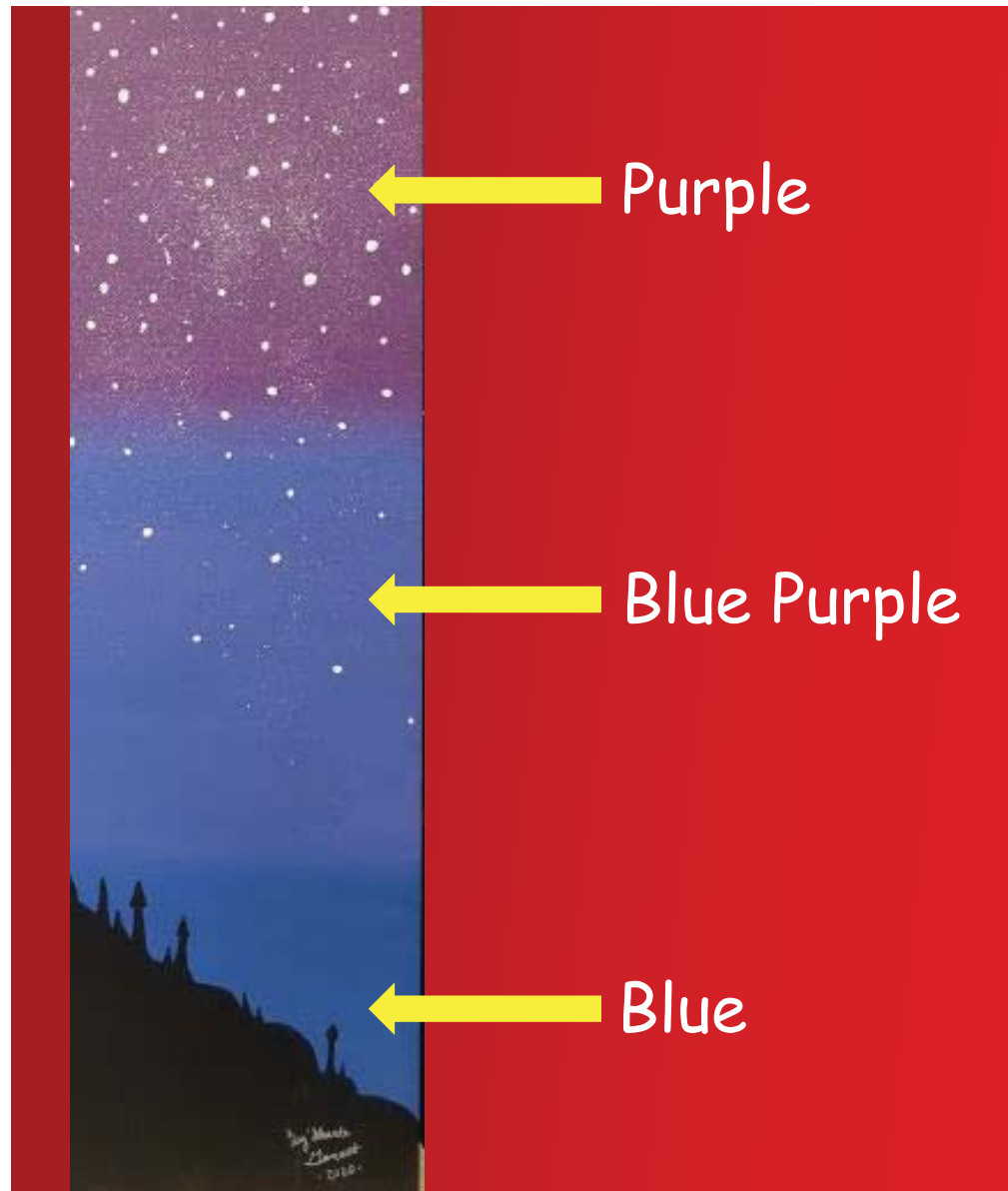
# Template for Rapunzel's Lanterns

## The Castle



## Step 1:

- Paint horizontal lines of *purple*, *light blue purple*, and *blue* to create the background with flat brush.
- Blend colors together where they meet while the paint is still wet.



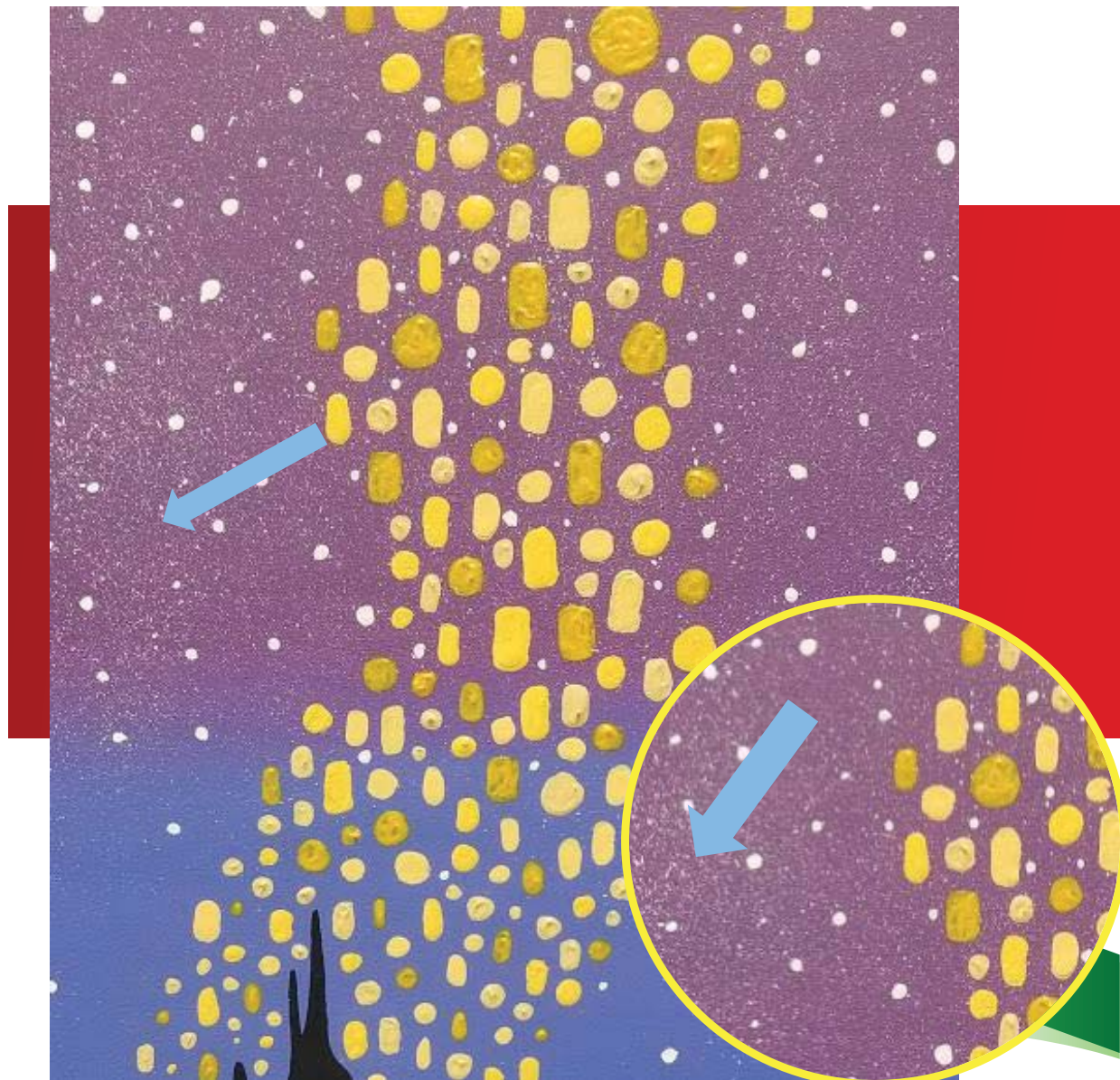
## Step 2:

- Let background dry
- With a **rigger brush** paint castle outline and fill it in with **black** paint towards the bottom of the canvas.



## Step 3:

- Get bristle brush and dip the tip of the brush in *white* paint.
- Use your finger and flick the tip of the brush above the castle onto the canvas to make little stars.



## Step 4:

- Paint small *light yellow* and *dark yellow* dots close to the castle with a rigger brush
- Build the *light yellow* and *dark yellow* dots into rectangle and circular shapes throughout the background in a zig-zag motion.





## Step 5:

- Lastly use the end of the rigger brush to make bigger stars with *white* paint around the lanterns and throughout the background.



Finished!

